

FE25/A16-3

U.S.S. LST 452, Flagship  
c/o Fleet Post Office  
San Francisco, California  
1 November 1944

CONFIDENTIAL

From: Commander Task Unit 78.1.4 (ComLSTGr20).  
To: Commander-in-Chief, U. S. Fleet.  
Via: (1) Commander Task Group 78.1 (Com7thPhib).  
(2) Commander Task Force 78. (Com7thPhib).  
(3) Commander SEVENTH Fleet.

Subject: Action Report; LEYTE Operation. 12 03045

References: (a) Article 762, U. S. Navy Regs., 1920.  
(b) Com7thPhib. ltr FE25/A16-3(3) Ser.  
0212 of 17 Feb. '44.  
(c) Com7thPhib. ltr FE25/A16-3, Ser.  
2565 of 18 Oct. '44.

Enclosure: (A) Action reports from Task Unit 78.1.4  
(In Twelve Parts).

1. In accordance with references (a), (b) and  
(c), enclosure (A) is forwarded herewith.

2. Task Unit 78.1.4 consisted of LST's 452(F),  
26, 168, 171, 181, 456, 458, 459, 462, 463, 465 and 466. The  
mission of this Unit was to land elements of the SIXTH Army  
at RED BEACH on LEYTE ISLAND, CENTRAL PHILIPPINES. This  
force entered SAN PEDRO Bay at about 0600 on the morning of  
20 October 1944. At about 0800 an enemy twin engine bomber  
or reconnaissance plane appeared at approximately 10,000  
feet on the port beam. Ships opened fire and the plane turned  
away but came back up the left flank of the convoy, dropping  
one bomb in the vicinity of one of our tugs. See Commanding  
Officers' antiaircraft action reports, enclosure (A). Ammuni-  
tion expended gave satisfactory performance.

895-7  
② 118318

3. This Unit arrived at the line of departure at 1015 and upon visual orders from the Control Officer and orders by voice radio from the Beachmaster, proceeded toward the beach at two-thirds speed. LST's 452, 171, 181 and 456 entered a field of enemy fire about a quarter of a mile from the beach and went to flank speed. Casualties were sustained on these ships. See appropriate reports from Commanding Officers, enclosure (A). The LST 452 was the only ship which beached successfully and succeeded in unloading the major portion of its cargo. Other ships grounded on a sand bar several hundred yards off the beach. The enemy guns apparently located behind Hill 522 could not be brought to bear on ships close to the beach. C.T.F. 78 was notified by radio of gun emplacement on Hill 522 and shortly after fire from cruiser and bombs from planes silenced the gun. Only a slight amount of mortar fire continued. All ships unloaded either in the bay onto LCT's or beached the next day. LST's 452, 26, 168, 465 and 466 returned to HUMBOLDT Bay, leaving RED BEACH at 1700 on 21 October and arrived at 0700 on 27 October. The remainder of the Unit departed at 1730 on 22 October and arrived at 1330 on 29 October.

4. During the approach to the beach several of the ships were hit and sustained material casualties but none were sufficiently serious to impair the effectiveness of the operation. See enclosure (A).

5. All hands performed their duties in an efficient and seamanlike manner under trying circumstances.

*D. M. Baker*  
D. M. BAKER.



USS LST 26  
Fleet Post Office  
San Francisco, California

Reg. No. 16319

R. S. No. \_\_\_\_\_

FE25/A16-3(3)

26 October, 1944

C O N F I D E N T I A L

From: Commanding Officer  
To: Commander-in-Chief, U. S. Fleet  
Via: (1) Commander Task Unit 78.1.4  
(Commander LST Group 20)  
(2) Commander Task Group 78.1  
(Commander SEVENTH Amphibious Force)  
(3) Commander Task Force 78  
(Commander SEVENTH Amphibious Force) 12 03045  
(4) Commander SEVENTH FLEET.

Subject: Action Report - Palo - Leyte Island, P.I.

Reference: (a) Article 874 (6) US Navy Regs. 1920  
(b) Com7thPhib Conf.Ltr. Serial 0212 of 17 Feb., 1944

Inclosure: (A) Anti-Aircraft Action Report Form.-p.5

1. In accordance with reference (a) and (b), the report of action against the enemy on 20 and 21 October, 1944 in Leyte Gulf and San Pedro Bay, Central Philippines is submitted herewith.

2. As part of Commander Task Group 78.1.4, Commander Task Force 77, Central Philippine Attack Force, this ship proceeded in convoy to Leyte Island, Philippines, 20 October, 1944. H-day, about 0625, while proceeding through Leyte Gulf, fire was opened on an attacking Japanese aircraft (NICK). The plane was high and no hits were seen to score from this ship. The plane dove low on the starboard quarter and sight of it was lost. See inclosure (A) attached.

(a) While proceeding to Red Beach about H-hour plus 65 minutes this ship was fired upon from the shore, although no casualties or damage were suffered. Three LSTs in company to the left on the beach were seen to be hit.

(b) This vessel was the second LST to hit the beach, however all but two ships grounded about 200 yards off shore so that no unloading was effected. While on the beach this ship was under automatic weapon fire from the shore but there was no damage to the ship or personnel casualties.

875-L

②

A- PART-2

3

USS LST 26  
Fleet Post Office  
San Francisco, California

FE25/A16-3(3)

26 October, 1944 Action Report - Palo - Leyte Island, P.I.

(c) This vessel at 1140 retracted and proceeded off shore in accordance with instructions from Commander Task Group 78.1.4. While retracting encountered more fire from the shore.

(d) Enemy planes attacked again about 1830. Ack-ack fire was seen by this vessel but due to darkness no planes were sighted within range and no guns were fired.

(e) At about 0530, 21 October, 1944, all ships were alerted for enemy air attack. Ack-ack fire was on both sides of this ship but no planes were sighted and no guns fired. A hit was observed on an Australian Cruiser near by.

(f) At 0807 proceeded toward Red Beach observing fire from the shore landing astray to the left. Automatic weapons fire was seen falling near the ship.

(g) At 0831 this ship beached at about 100 yards off shore so pontoon causeways had to be attached to effect the unloading. At 0938 all preparations made and commenced unloading. During the unloading automatic weapons fire was frequent, however no casualties. Heavy artillery, machine gun and rifle fire was noticed on the beach throughout the day. Shelling from Naval Guns bombarded the beach. At 1733 completed unloading. At 1739 retracted very easily and joined a convoy in San Pedro Bay. At about 1830 while standing out in Leyte Gulf, the convoy was attacked by enemy planes. The escorting destroyers opened fire. Later concentrated ack-ack fire was noticed astern. No damage was noticed in either raid.

3. The performance of all armament was good and its operation was very efficient.

4. The discipline, performance of duty, and moral courage of the officers and crew was outstanding during this operation.

*R. B. Newell*  
R. B. NEWELL

Advance-copy  
Comdr-in-Chief, U. S. Fleet.

895-L

③

4



CONFIDENTIAL

## ANTI-AIRCRAFT ACTION BY SURFACE SHIPS

Location of ship LEYTE, P.I. U. S. S. LST 26  
 Date ..... 194.....

## NOTES

- (a) **Repel Attack First**—Then collect data for this report!  
 (b) Do not "gun deck" this report—if data cannot be estimated with reasonable accuracy enter dash in space for which no data is available.  
 (c) These sheets are to be filled out immediately after action is completed with data available from ship's log, memory, and consultation with ship's officers. Information is essential in order that the effectiveness of our equipment can be determined. Where data is of doubtful accuracy fill in with general terms. The obtaining of this information must not be allowed in any way to adversely affect the handling of equipment during action.

1. Surprise attack (yes or no) YES **12 03045**  
 2. Method picking plane up (Radar, binoculars, naked eye) binoculars  
 (If by Radar state type of set) none  
 (a) Lookout(s) or special equipment detector operator(s) :  
J. E. Brammer Lieut.(jg) Executive and  
 (Name) (Rate) (Service No.) Recognition Officer.  
 made initial contact by SIGHT  
 (sound), (radar), (SMSD), (MAD), (Sight)  
 3. Range plane was picked up (50 miles, 30 miles, 10 miles, less 5 miles) 10 miles  
 4. Number of planes ONE (F) "NICK" or observation and  
 5. Type of plane (Fighter, scout, dive-bomber) (O) "DINAH" Type of attack low level  
bombing  
 6. Speed & altitude (High and fast, intermediate and fast, low and fast, high and slow, intermedi-  
 ate and slow, low and slow) (S) high & fast  
 7. Guns firing AA Size 40's & 20's Number 40's ... 5 ea  
20's ... 6 ea  
 Method of control manual Method spotting binocular  
 8. Ammunition expended 40's... 46 rnds; 20's .. 360 rnds  
 9. Percent service allowance expended 1/2 of 1%  
 10. Approximate time tracking to first shot 30 seconds  
 11. Approximate time of first hits none  
 12. Approximate time first shot to last shot 0626 to 0627

895-L

(4)

Enclosure (A)

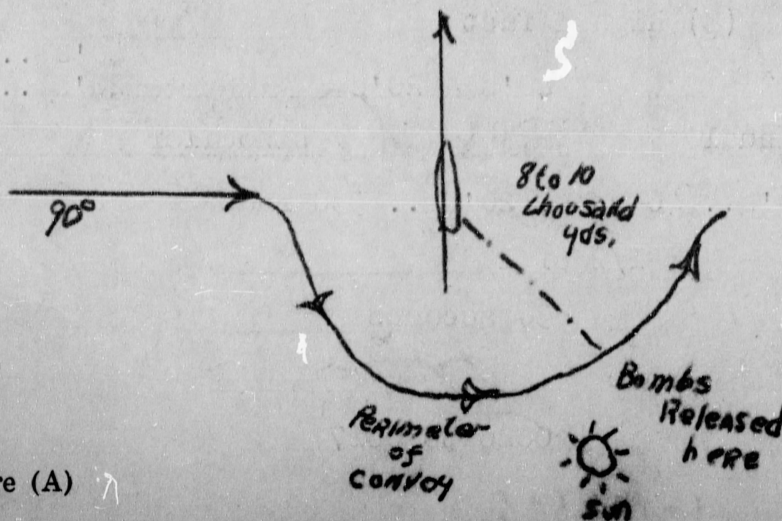
5

**CONFIDENTIAL**

13. Approximate position angle open fire .....  $45^{\circ}$  .....
14. Approximate position cease fire .....  $40^{\circ}$  to  $45^{\circ}$  .....
15. Approximate bearing first shot .....  $270^{\circ}$  .....
16. Approximate bearing last shot .....  $190^{\circ}$  .....
17. Approximate range first shot ..... 16000 to 20000' .....
18. Approximate range last shot ..... 10000 to 16000' .....
19. Approximate altitude of bomb release ..... 200 to 500 ..... Type bomb small .....
20. Approximate range torpedo release ..... ---- ..... Size of torpedo ..... ---- .....
21. Hits on ship none ..... Was ship strafed no ..... Size gun - - .....
22. Number near bomb misses none ..... Casualties from near misses none .....
23. Planes shot down—Sure none ..... Possible ---- ..... Damage ---- .....
- By what size gun ---- .....
24. Details of damage to target by gunfire if available none .....
- .....
- .....
25. Performance of ammunition (Excellent, good, bad, poor) Good .....
26. Pattern sizes (Large, small excessive) ..... medium .....

**SKETCH**

- (a) Indicate direction of attack relative ship's head.
- (b) Show relative position of sun.
- (c) Indicate own maneuvers. Continued on course



895-6  
(5)

Enclosure (A)



U.S.S. LST 181  
c/o Fleet Post Office  
San Francisco, California

Reg. No. 16319

R. S. No.

CONFIDENTIAL

28 October, 1944.

From: Commanding Officer.  
To : Commander-in-Chief, U. S. Fleet.  
Via : (1) Commander Task Unit 78.1.4.  
(Commander LST Group 20)  
(2) Commander Task Unit 78.2.4.  
(Commander LST Flotilla 7)  
(3) Commander Task Unit 78.1.3.  
(Commander Transport Unit)  
(4) Commander Task Group 78.1.  
(Commander 7th Amphibious Force)  
(5) Commander Task Force 78.  
(Commander 7th Amphibious Force)  
(6) Commander Central Phillipines Attack Force.  
(Commander 7th Fleet)

12 03045

Subject: Action Report - Palo, Leyte Island, P.I.

References: (a) Article 874(6) U. S. Navy Regulations 1920.  
(b) Com7thPhib Cof. Ltr. Serial 0212 of 17 Feb., 1944.

PART I.

1. This vessel attached to Division 37, Group 19, of Flotilla 7 and assigned to Task Unit 78.1.4. (Red Beach - Palo Attack Group.)

2. Loaded at Hollandia, New Guinea on October 10th, 1944. Load made up of 74 Vehicles loaded with 68 tons of cargo, 160 tons of bulk cargo consisting of 100 tons of ammunition and 250 drums of gasoline, 411 Army personnel and 13 Naval personnel. Departed from Hollandia on October 13th 1944 in Echelon L-1 of Commander Task Force 78 OP-Plan 101-44.

PART II.

1. Arrived Leyte Gulf, Phillipine Islands on October 20th 1944 without incident. While approaching anchorage, underwent air attack from single enemy plane. Plane approached from 230° T at 0610 while the ship was on course 296° T. Opened fire at 0621 with all guns. No hits observed. Expended 385 rounds of 20 m/m, 440 rounds of 50 cal., and 24 rounds of 40 m/m. No bombs were dropped and no damage or casualties were received by the ship. Anchored off Vigia Point at 0847. Underway to beach at Red Beach, Palo, Leyte Island, P.I., at 0941. Observed artillery fire from beach on small boat waves preceding us. Came within range of artillery fire at 1042 receiving several near misses. Received direct hit on main deck, port side, amidships starting fires in two Army trucks loaded with small arms ammunition. Ammunition commenced to explode. Commenced fighting fire with Repair Parties #1 and #2. Received second direct hit main deck, port side, forward of superstructure.

A-PART-5

dup. 7

(2)

Received third and fourth direct hit port side, amidships twelve feet above water line. Ship grounded approximately 200 yards from beach at 1117. Steering knocked out by shell fire, switched to hand steering. Fire brought under control by Repair Parties. Fifth hit received on main deck, port side of deck house. Sixth hit received on main deck, amidships. Seventh hit received at hinge of port bow door, six feet above water line. Two more hits received on trucks on main deck. Retracted from beach on orders from CTU 78.1.4 at 1135. Fire extinguished 1136. Two more hits received on starboard side amidships, one two feet above water line and the other six feet above water line. There were near misses off our stern. Repairs effected to steering engine. Proceeded to anchorage out of range of fire. Anchored 1303, secured all engines, motors and fires except auxiliaries for power on tank deck exhaust fans and fire and bilge pump as gasoline drums, twelve in number in tank deck had been pierced by shell fragments flooding after end of tank deck with gasoline and filling the ship with fumes. Flooded down the tank deck with foamite and kept fog nozzles playing on remaining gasoline drums, meanwhile running all tank deck exhaust fans. Total casualties suffered; 25 Army personnel and 11 Naval personnel including 4 Naval and 3 Army killed.

2. Laying to awaiting orders and effecting temporary repairs. Placed wooden patches over holes near water line. Sent nine casualties to A.P.A. 48 and seven to A.K. 41 as our facilities had been ruined by fire and shell fragments.

3. Went to general quarters on signal from CTF 78 at 1600. Secured from general quarters at 1630. No enemy aircraft came within range of this vessel. Set general quarters at 1835 on signal from CTF 78. Secured general quarters at 2010. No enemy planes seen by this vessel. Set general quarters at 0550 on October 21st 1944 on signal from CTF 78. Secured from general quarters at 0635. No enemy planes having come within range of this vessel.

4. Got underway at 0938 proceeding to anchor near beach to unload into L C Ts. Anchored at 1130. Commenced unloading into L C T at 1337. Completed loading first L C T at 1415. Underway to beach at 1432 on orders from Beachmaster. Ship grounded approximately 120 yards from beach at 1450. Waiting for pontoon causeway to be built out from beach. Occasional sniper fire directed at ship but received no casualties or damage. Set general quarters at 1635 on signal from beach. Secured general quarters at 1650. No enemy action. Retracted from beach at 1725 on orders from Beachmaster as not sufficient pontoons were available to reach the ship. Anchored 2000 yards off beach at 1755. Commenced unloading into L C T at 1819. Completed loading second L C T at 1847. Received nineteen casualties aboard from beach. Repairs having been made to our surgical ward. Casualties consisted of eleven Army personnel and eight Filipino civilians including two women and three small children. Set general quarters on signal from CTF 78 at 1840. Secured general quarters at 2002. No enemy action.



(3)

5. Set general quarters at 0548 on October 22nd 1944 on signal from CTF 78. Opened fire on enemy plane with 40 m/m gun, probable hits observed. Expended 37 rounds of 40 m/m ammunition. Plane did not come within range of other guns. No casualties or damage received. Secured general quarters at 0700. L C T arrived at 0710 and was loaded by 0755. Got underway at 0808 to beach on orders from CTU 78.1.4. Ship grounded approximately 200 yards from beach at 0852. Retracted from beach at 0900 on orders from CTU 78.1.4 and anchored at 0920 to continue unloading into L C Ts. Sent Army and Navy dead ashore in small boat for burial by Army Graves Registration Service. Returned four Army casualties to beach as wounds were only minor.

6. Got underway at 1725 on orders from CTU 78.1.4. All cargo and all personnel unloaded excepting 25 tons of ammunition. Underway at various courses and speeds proceeding to form with L S Ts 171, 456, 463, 459, 465, 462, 1027, 699, 696, 700, 911, 1014, 910 and 614, Commander L S T Flotilla 8 in command. Went to general quarters on signal from CTF 78 at 1839. Secured general quarters at 2002 on signal from CTF 78. Proceeded to Hollandia, New Guinea arriving at 1300, October 28, 1944 without incident.

#### PART III

1. There was no failure of any ordnance equipment and the total ammunition expended was as follows;

40 m/m - - - - - 111 rounds  
20 m/m - - - - - 520 rounds  
50 cal. - - - - - 440 rounds

#### PART IV

1. Summary of damage received by this vessel is as follows:  
Extent of damage received on 20 October, 1944 at Red Beach, Leyte, P.I.

##### PORT SIDE

Compt. A204AE.	Shell hole in bulkhead, tank deck side.
" A202E.	(Bow door oper. mach.) Shell hole in forward bulkhead and edge of port bow door. Hole in bulkhead to tank deck.
" 210L.	Large shell hole in bulkhead outboard. Lockers shattered. Ventilation pipes perforated.
" 212L.	Large shell in bulkhead to tank deck, one hole in bulkhead to compartment 210L.
" 214L.	Five punctures in overhead and bulkheads.
" B204EL.	Two shell holes in outboard bulkhead. Vent overflow pipes and check valve sheared off. Ventilating fans and vent pipes punctured. Fresh water pipe punctured. Degaussing cable mutilated.
" C202L.	Shell hole in bulkhead, tank deck side. Port main engine spark arrester sheared off. Gun cabinet perforated by shrapnel. Overhead in C202L perforated. Ventilating fans damaged.

##### STARBOARD SIDE

Compt. A209L.	Large shell hole in outboard bulkhead. Degaussing cable sheared. Shell hole in bulkhead, tank deck side. Ventilating pipes perforated. Bunks and lockers shattered.
---------------	---

(4)

Compt. A311. Shell hole in outboard bulkhead. Power panel #3-19-1, demolished including wiring. Test switchboard perforated. Bench and cabinet perforated beyond repair, large vise shattered, ventilating pipes sheared off. Hole in bulkhead to tank deck.

#### MAIN DECK

Two life rafts perforated.  
One life raft stanchion bent and perforated.  
Officer's quarters port side, perforated, door sheared off.  
Large shell hole in ventilator amidships, port side.  
Eleven lengths of fire hose damaged.  
Two hose racks damaged.  
No. 2 boat winch casing damaged.  
No. 6 - 20 m/m gun ruined from direct hit, ready box burned and damaged.  
No. 2 - 50 cal. gun damaged.  
Anchor capstan wiring severed.  
Deisel oil filling hose punctured. (3 lengths)  
Probable screw damage due to near miss.

#### TANK DECK

Frame 37 damaged and weakened by shell fire, also wiring and light fixture on frame 37 damaged.  
Frame 20 wiring severed, light fixtures knocked off, fire main punctured.  
Frame 19 light fixture knocked off.

#### DAMAGE TO ARMY EQUIPMENT

1. L V T hull punctured, port track damaged, engine damaged.
2. Three trucks severely damaged by fire and shell fragments.
3. Boom of mobile crane badly damaged by shell fragments.
4. Twelve drums of gasoline ruptured by shell fragments.
5. The L V T, gasoline drums and mobile crane were in the tank deck and the three trucks were on the main deck.

#### PART V

1. The entire ship's company without exception performed in keeping with the highest traditions of the Navy of the United States. There was no trace of panic and the morale remained excellent.

2. Surgical Team #1 and N. B. MORRIS, Lt. (jg) USNR (MC) surgical specialist, officers and men did an exceptionally excellent job in caring for casualties in spite of the fact that all surgical team's facilities on the port side were damaged by shell fragments and fire. The ship's doctor and corpsmen are equally deserving of praise. Major Paul C. DOERING, USA (MC) and Captain Thomas A. HENSON, USA (MC), both attached to 16th portable hospital unit USA, passengers aboard this vessel were in great help in caring for the wounded and distinguished themselves by their efforts.

3. Acts of heroism of individuals are reported in full requests for rewards submitted elsewhere.



(5)

4. Detailed list of casualties is as follows;

---

KIFFER, Lester John, Bkrl/c, USN 552 23 14  
10-20-44 Killed in action aboard U.S.S. LST 181 while beaching at Leyte Is.,  
P.I., by enemy mortar fire.  
Diagnosis: Injuries multiple extreme. #2542  
Prognosis: Fatal.  
Disposition: Died.

12 03045

---

WRIGHT, Kenneth Marion, Cox., USN-I, 800 16 04  
10-20-44 Killed in action aboard U.S.S. LST 181 while beaching at Leyte Is.,  
P.I., by enemy mortar fire.  
Diagnosis: Injuries multiple extreme. #2542  
Prognosis: Fatal.  
Disposition: Died.

---

BAUM, William Peter, Cox., USN-I, 810 23 60  
10-20-44 Killed in action aboard U.S.S. LST 181 while beaching at Leyte Is.,  
P.I., by enemy mortar fire.  
Diagnosis: Injuries multiple extreme. #2542  
Prognosis: Fatal.  
Disposition: Died.

---

REESE, David Vaughn, F2/c, USNR SV6, 923 90 46  
10-20-44 Killed in action aboard U.S.S. LST 181 while beaching at Leyte Is.,  
P.I., by enemy mortar fire.  
Diagnosis: Injuries multiple extreme. #2542  
Prognosis: Fatal.  
Disposition: Died.

---

LOGAN, Ronald Oliver, Sl/c, USNR SV V-6, 822 09 81  
10-20-44 Wounded in action aboard U.S.S. LST 181 while beaching at Leyte Is.,  
P.I., by enemy mortar fire.  
Diagnosis: Wound gunshot, Anterior left foreleg and thigh. #2576  
Prognosis: Favorable.  
Disposition: Remained aboard.

---

NICHOLS, James Robert, Std3/c, USNR V-6, 635 13 85  
10-20-44 Wounded in action aboard U.S.S. LST 181 while beaching at Leyte Is.,  
P.I., by enemy mortar fire.  
Diagnosis: Wound gunshot, Left anterior foreleg. #2576  
Prognosis: Favorable.  
Disposition: Remained aboard.

---

⑥

//

---

ADAMS, Henry Ford, SK3/c, USNR SV V-6, 866 58 26  
10-20-44 Wounded in action aboard U.S.S. LST 181 while beaching at Leyte Is.,  
P.I., by enemy fire.  
Diagnosis: Wound gunshot, Left forearm. #2576  
Prognosis: Favorable.  
Disposition: Remained aboard.

---

HARRISON, Willard (none), Sl/c, USNR V-6, 635 34 36  
10-20-44 Wounded in action aboard U.S.S. LST 181 while beaching at Leyte Is.,  
P.I., by enemy fire.  
Diagnosis: Wound gunshot, Lateral side of right foot. #2576  
Prognosis: Favorable.  
Disposition: Remained aboard.

---

12 03045

---

CANAVAN, Vincent Edward, Phm2/c, USNR V-6 377 22 63  
10-20-44 Wounded in action aboard U.S.S. LST 181 while beaching at Leyte Is.,  
P.I., by enemy fire.  
Diagnosis: Wound gunshot. Right buttock and calf. #2576  
Prognosis: Favorable.  
Disposition: Remained aboard.

---

---

BRANDON, Leroy (none), Phm1/c, USNR V-6, 670 13 22  
10-20-44 Wounded in action aboard U.S.S. LST 181 while beaching at Leyte Is.,  
P.I., by enemy mortar fire.  
Diagnosis: Wound gunshot. Right thigh and calf with hemorrhage and shock.  
#2576  
Prognosis: Serious.  
Disposition: Transferred to U.S.S. LST 466.

---

---

HOWELL, Herman Yates, Sl/c, (FC) USNR V-6, 631 20 09  
10-20-44 Wounded in action aboard U.S.S. LST 181 while beaching at Leyte Is.,  
P.I., by enemy mortar fire.  
Diagnosis: Wound gunshot. Laceration 2" x 4" left thigh. Minor shrapnel  
wounds of left deltoid and elbow areas. Shock. #2576  
Prognosis: Favorable.  
Disposition: Transferred to U.S.S. KA 41.

---

---

FRIEDMAN, Eugene (none), 1st Lieut. O-1175711 13th F.A. Bn.  
10-20-44 Killed in action aboard U.S.S. LST 181 while beaching at Leyte Is.,  
P.I., by enemy fire.  
Diagnosis: Wound gunshot.  
Prognosis: Fatal.  
Disposition: Died.

---



---

THEODORAKOS, Paul      Sgt.      13008106      13th F.A. Bn.  
 10-20-44 Killed in action aboard U.S.S. LST 181 while beaching at Leyte Is.,  
 P.I., by enemy fire.  
 Diagnosis: Injuries multiple extreme.  
 Prognosis: Fatal.  
 Disposition: Died.

---

BURCH, Johnny M.,      Pfc.      37705329      532D EB & SR  
 10-20-44 Killed in action aboard U.S.S. LST 181 while beaching at Leyte Is.,  
 P.I., by enemy fire.  
 Diagnosis: Injuries multiple extreme.  
 Prognosis: Fatal.  
 Disposition: Died.

---

SAYER, Albert      Capt. O-358508      13th F.A. Bn.  
 10-20-44 Wounded in action aboard U.S.S. LST 181 while beaching at Leyte Is.,  
 P.I., by enemy fire.  
 Diagnosis: Wound gunshot.  
 Prognosis: Serious.  
 Disposition: Transferred to U.S.S. KA 16.

12 03C45

---

BENAVIDZ, Fortunate J.,      Pfc.      38362994      469 AAA AW Bn.  
 10-20-44 Wounded in action aboard U.S.S. LST 181 while beaching at Leyte Is.,  
 P.I., by enemy fire.  
 Diagnosis: Wound gunshot.  
 Prognosis: Favorable.  
 Disposition: Transferred to U.S.S. KA 16.

---

SMITH, Silas B.      T3      17051807      16th Port Surg Hosp.  
 10-20-44 Wounded in action aboard U.S.S. LST 181 while beaching at Leyte Is.,  
 P.I., by enemy fire.  
 Diagnosis: Wound gunshot.  
 Prognosis: Favorable.  
 Disposition: Transferred to U.S.S. KA 16.

---

CHIARAVALLE, Fortunato P.      Pvt.      39908354      13th F.A. Bn.  
 10-20-44 Wounded in action aboard U.S.S. LST 181 while beaching at Leyte Is.,  
 P.I., by enemy fire.  
 Diagnosis: Wound gunshot.  
 Prognosis: Favorable.  
 Disposition: Transferred to U.S.S. PA 48.

---

SCHLAPKOHL, Kermit Q.      Pvt.      19140906      24th Q.M.  
 10-20-44 Wounded in action aboard U.S.S. LST 181 while beaching at Leyte Is.,  
 P.I., by enemy fire.  
 Diagnosis: Wound gunshot.  
 Prognosis: Favorable.  
 Disposition: Transferred to U.S.S. PA 48.

BEACH, James F. Pvt. 33659230 532D EB & SR  
 10-20-44 Wounded in action aboard U.S.S. LST 181 while beaching at Leyte Is.,  
 P.I., by enemy fire.  
 Diagnosis: Wound gunshot.  
 Prognosis: Favorable.  
 Disposition: Transferred to U.S.S. PA 48.

QUINN, Gerald W. Capt. O-420766 16th port. hosp.  
 10-20-44 Wounded on action aboard U.S.S. LST 181 while beaching at Leyte Is.,  
 P.I., by enemy fire.  
 Diagnosis: Wound gunshot.  
 Prognosis: Favorable.  
 Disposition: Transferred to U.S.S. PA 48.

HALLIGAN, Albert H. Pvt. 39714391 532D EB & SR  
 10-20-44 Wounded in action aboard U.S.S. LST 181 while beaching at Leyte Is.,  
 P.I., by enemy fire.  
 Diagnosis: Wound gunshot.  
 Prognosis: Favorable.  
 Disposition: Transferred to U.S.S. PA 48. **12 03C45**

EVANGELISTA, Lawrence C. 2nd Lieut. O-1054983 469 AAA AW Bn.  
 10-20-44 Wounded in action aboard U.S.S. LST 181 while beaching at Leyte Is.,  
 P.I., by enemy fire.  
 Diagnosis: Wound gunshot.  
 Prognosis: Favorable.  
 Disposition: Transferred to U.S.S. PA 48.

RICARD, Pvt. ~~XXXXXX~~ 469 AAA AW Bn.  
 10-20-44 Wounded in action aboard U.S.S. LST 181 while beaching at Leyte Is.,  
 P.I., by enemy fire.  
 Diagnosis: Wound gunshot.  
 Prognosis: Favorable.  
 Disposition: Transferred to U.S.S. PA 48.

FISHER, George H. Pvt. 7025165 24th Q.M.  
 10-20-44 Wounded in action while aboard U.S.S. LST 181 while beaching at Leyte  
 Is., P.I., by enemy fire.  
 Diagnosis: Wound gunshot.  
 Prognosis: Favorable.  
 Disposition: Transferred to U.S.S. PA 48.

BAYNE, James Pvt. 33704706 16th port surg hosp.  
 10-20-44 Wounded in action aboard U.S.S. LST 181 while beaching at Leyte Is.,  
 P.I., by enemy fire.  
 Diagnosis: Wound gunshot.  
 Prognosis: Favorable.  
 Disposition: Transferred to U.S.S. PA 48



---

FORD, F. Pfc. 35428396 13th F.A. Bn.  
 10-20-44 Wounded in action aboard U.S.S. LST 181 while beaching at Leyte Is.,  
 P.I., by enemy fire.  
 Diagnosis: Wound gunshot.  
 Prognosis: Favorable.  
 Disposition: Transferred to U.S.S. KA 41.

---

BROWN Paul N. Pvt. 34880599 532D EB & SR  
 10-20-44 Wounded in action aboard U.S.S. LST 181 while beaching at Leyte Is.,  
 P.I., by enemy fire.  
 Diagnosis: Wound gunshot.  
 Prognosis: Favorable.  
 Disposition: Transferred to U.S.S. KA 41.

---

STONE, Anthony G. Pvt. 38075960 Can. Co.  
 10-20-44 Wounded in action aboard U.S.S. LST 181 while beaching at Leyte Is.,  
 P.I., by enemy fire.  
 Diagnosis: Wound gunshot.  
 Prognosis: Favorable.  
 Disposition: Transferred to U.S.S. KA 41.

---

12 03045

ANDERSON, Vernal L. Pvt. 37575638 532D EB & SR  
 10-20-44 Wounded in action aboard U.S.S. LST 181 while beaching at Leyte Is.,  
 P.I., by enemy fire.  
 Diagnosis: Wound gunshot.  
 Prognosis: Favorable.  
 Disposition: Transferred to U.S.S. KA 41.

---

PRICE, Ray A. 1st Lieut. 0-1175834 13th F.A. Bn.  
 10-20-44 Wounded in action aboard U.S.S. LST 181 while beaching at Leyte Is.,  
 P.I., by enemy fire.  
 Diagnosis: Wound gunshot.  
 Prognosis: Favorable.  
 Disposition: Transferred to U.S.S. KA 41.

---

ROARK, Leonard M. Pfc. 35495296 13th F.A. Bn.  
 10-20-44 Wounded in action aboard U.S.S. LST 181 while beaching at Leyte Is.,  
 P.I., by enemy fire.  
 Diagnosis: Wound gunshot.  
 Prognosis: Favorable.  
 Disposition: Transferred to U.S.S. KA 41.

---

STEJSKAL, Ludwig Cpl. 37194414 532D EB & SR  
 10-20-44 Wounded in action aboard U.S.S. LST 181 while beaching at Leyte Is.,  
 P.I., by enemy fire.  
 Diagnosis: Wound gunshot.  
 Prognosis: Favorable.  
 Disposition: Transferred to U.S.S. KA 41.

---

(10)

---

ALBRITTON, Andrew S.                      Capt.                      O-368217                      16th port surg hosp.  
10-20-44 Wounded in action aboard U.S.S. LST 181 while beaching at Leyte Is.,  
P.I., by enemy fire.  
Diagnosis:      Wound gunshot.  
Prognosis:      Favorable.  
Disposition:    Duty.

---

MYERS, Lester H.                      Pvt.                      39418701                      469 AAA AW Bn.  
10-20-44 Wounded in action aboard U.S.S. LST 181 while beaching at Leyte Is.,  
P.I., by enemy fire.  
Diagnosis;      Wound gunshot.  
Prognosis:      Favorable.  
Disposition:    Duty.

---

COX, John M.                      Pvt.                      35893352                      13th F.A. Bn.  
10-20-44 Wounded in action aboard U.S.S. LST 181 while beaching at Leyte Is.,  
P.I., by enemy fire.  
Diagnosis:      Wound gunshot.  
Prognosis:      Favorable.  
Disposition:    Duty.

---

**12 03045**

*R. A. Wilson*  
R. A. WILSON

Advance copy to:  
Comminch



Reg. No. 16319  
R. S. No. \_\_\_\_\_

U.S.S. LST # 459  
c/o Fleet Post Office  
San Francisco, California  
28 October 1944.

CONFIDENTIAL

From: The Commanding Officer.  
To : Commander-in-Chief, U.S. Fleet.  
Via : (1) Commander Task Unit 78.1.4.  
(2) Commander Attack Group 78.1.  
(3) Commander Task Force 78.  
(4) Commander SEVENTH Fleet.

Subject: Action Report - Leyte Operation; Echelon L-1.

References: (a) Article 874 (b), U.S. Navy Regulations 1920.  
(b) Commander Task Force 78, operation plan 101-44.  
(c) Commander Task Unit 78.2.4, Radio message 102125.  
(d) CTF 76, 112321 Visual.  
(e) CTF 76, 120140 Visual.  
(f) Com7thPhib Conf., ltr., Ser., 0212.

12 03045

Enclosures: (A) Anti-Aircraft Action Report.-p.19  
(B) Anti-Aircraft Action Report.-p.21  
(C) Comments and remarks on Echelon Plan No. 101-44.-p.23

1. At 1700, 9 October 1944 departed Hollandia, Dutch New Guinea with Echelon L-1, Group TWENTY of reference (b), with LST's 458, 469, LSM's 18, 20, 22, via route Zebra. No escort. Arrived Aitape, New Guinea 0800, 10 October 1944 and started loading. At 2325, 10 October 1944 impossible to continue loading as heavy swells had cracked the eye beams of the ramp.

2. At 0800, 11 October 1944 departed from Aitape, New Guinea for Humboldt Bay, Dutch New Guinea in compliance with reference (c), route Zebra, no escort. At 2230, 11 October 1944 went alongside of U.S.S. MIDAS for ramp repairs as per reference (d).

3. At 1115, 12 October 1944 as per reference (e), got underway for Aitape, New Guinea to complete loading, route Zebra, no escort. Arriving at Aitape, New Guinea 2220, 12 October 1944 and commenced loading.

4. At 0115, 13 October 1944 completed loading and got underway for Humboldt Bay, Dutch New Guinea, as per reference (b), route Zebra, arriving there 1200, 13 October 1944 and went alongside U.S.S. MIDAS to complete repairs.

5. At 1445, 13 October 1944, underway to take convoy position. At 1645, 13 October 1944, pursuant to reference (b) assumed position in Echelon in accordance with cruising disposition C-2, proceeded at 9 knots along route Albatras and Shearwater.

895-4  
②

A-PART-8

17

6. At 1100, 16 October 1944 covoy changed cruising disposition to C-1.

7. At 1730 to 1845, 17 October 1944, at 1730 to 1845, 18 October 1944 and at 1740 to 1855, 19 October 1944, went to several quarters on orders from Commander Task Unit 78.2.4. At 0545, 20 October 1944 set condition 1-M. At 0620 single enemy plane came within range of ship. Opened fire, no apparent result. See Enclosure (A).

8. At 1115, 20 October 1944 under enemy mortar and shell fire from the beach burst were to the starboard and port and astern, but no damage. Attempted to beach in accordance with reference (b), at Red Beach, just north of Palo on Leyte Island, with 60,000 gallons of fuel and water and all ballast tanks empty and at standard speed. Grounded aft, with the bow 100 yards from beach and 10 feet of water at the edge of the ramp. Unable to unload. Retracted under orders and anchored awaiting instruction from Commander Task Unit 78.1.4. At 1900, 20 October, enemy planes attacked shipping in harbor but out of range of this ship. Did not open fire.

9. At 0600, 21 October 1944 enemy planes attack shipping, but none were in range of this ship. Did not open fire. At 1000, 21 October 1944 pursuant to order of Commander Task Unit 78.1.4, moved closer to beach and began to unload cargo into LCT's. At 1900, 21 October 1944, enemy planes attacked the beach, but none came within range of this ship.

10. At 0630, 22 October 1944, enemy planes dropped bomb 1000 feet off starboard bow. Were unable to open fire until plane was directly overhead due to smoke screen on starboard side of ship. Had no apparent results. See Enclosure (B). At 0900, 22 October 1944, completely unloaded.

11. At 1700, 22 October 1944, pursuant to reference (b) departed from Leyte Gulf with Echelon L-3, Commander Task Unit 78.1.4 aboard, Echelon commander aboard U.S.S. LST 614, for Humboldt Bay, Dutch New Guinea, along course 30 miles to the south of route Shearwater and Albatras, speed 9 knots. Escorts STEVENS, DD, BURLINGTON, PF. At 1900, 22 October 1944 enemy planes attacked ships on starboard side of convoy, none coming within range of this ship. Did not open fire.

12. Casualties on board are 62 Army and one Navy.

13. At 1300, 28 October 1944, returned to Humboldt Bay, Dutch New Guinea pursuant to reference (b). Mission completed.

*N. Waggoner*  
N. WAGGONER, Lieut., USNR.



CONFIDENTIAL

ANTI-AIRCRAFT ACTION REPORT

ENCLOSURE (A)

Location of ship L 10° 55" N 125° 20' E U.S.S. LST # 459.  
Local Civil Time 0620 Date 20 October 1944

NOTES: REFUEL ATTACK FIRST - Then collect data for this report.  
If data cannot be estimated with accuracy enter a dash.

Echelon L-1 Operation

In company with other vessels (Yes or No) Yes IF YES, name vessels Plan 101-44

Surprise attack (Yes or No) No Were guns manned at time Yes How many All (17)

Number of planes 1 Type of planes Bomber Altitude 1500 Yards  
2 Engine

Type of attack Medium level bombing No. planes in attack 1

Number of attacks 1 Average number of planes each attack 1

Guns firing - Size and type 3" 50 Cal Number 3 Opening Range 3000 Yards  
20MM

Ammunition expended 3" 50 Cal 40 Rounds Ammunition remaining 420 "  
20MM

Performance of guns (Excellent, good, fair, poor) Excellent

Performance of ammunition Excellent Performance of gun crews Fair

Approximate altitude of bomb release 12 03045 Feet. Type of bombs 12 03045

Hits on ship None Location of hits

Damage None

Number near bomb misses None Damage

Was ship strafed No Size gun  Type of bullet (explosive, etc)

Damage None

Casualties from Bomb Hits  Near Bomb Misses  Strafing

PLANES SHOT DOWN - SURE 0 POSSIBLE  DAMAGED

REMARKS: (Include commendatory or adverse comments on performance of officers and crew)

Signature N. Waggener  
Rank Lieut. Title D-V(S)

Sketches: (On back side of report show by outline sketch direction of attack, ship's head, relative position of Sun, positions of hits and damage, and additional remarks, as desired.)

875-4

(4)

19

CLASSIFICATION

ANTI-AIRCRAFT ACTION REPORT

ENCLOSURE (A)

Location of ship: A 100 250 N 125 20 W U.S.S. 1st 4 452  
Local Civil Time 0800 Date 20 October 1944

NOTES: REPEAT ATTACK FIRST - Then collect data for this report.  
If data cannot be obtained with accuracy, enter a dash.

Section 1-1 Operation

In company with other vessels (Yes or No) Yes \_\_\_\_\_ No \_\_\_\_\_  
Surprise attack (Yes or No) Yes \_\_\_\_\_ No \_\_\_\_\_  
Number of planes 1 \_\_\_\_\_ Type of plane \_\_\_\_\_  
Type of attack \_\_\_\_\_  
Number of attacks \_\_\_\_\_  
Guns firing - Size and type \_\_\_\_\_  
Ammunition expended \_\_\_\_\_  
Performance of guns (Excellent, Good, Fair, Poor) \_\_\_\_\_  
Performance of ammunition \_\_\_\_\_  
Approximate altitude of bomb release \_\_\_\_\_  
Hits on ship \_\_\_\_\_  
Damage \_\_\_\_\_  
Number near bomb misses \_\_\_\_\_  
Was ship strafed \_\_\_\_\_  
Damage \_\_\_\_\_  
Casualties from bomb hits \_\_\_\_\_  
PLANE SHOT DOWN - CURS \_\_\_\_\_  
REMARKS: (Include commentary on performance of officers and crew)

Signature \_\_\_\_\_  
Name \_\_\_\_\_  
Sketches: (On back side of report show by outline sketch position of attack, ship's head, relative position of gun, positions of hits and damage, and additional remarks, as desired.)



CONFIDENTIAL

ANTI-AIRCRAFT ACTION REPORT

ENCLOSURE (B)

Location of ship L11° 11' N 125° 03" E U.S.S. LST # 459  
Local Civil Time 0630 Date 22 October 1944.

NOTES: REPEL ATTACK FIRST - Then collect data for this report.  
If data cannot be estimated with accuracy enter a dash.

In company with other vessels (Yes or No) Yes IF YES, name vessels Leyte Harbour LST's & LSM's

Surprise attack (Yes or No) No Were guns manned at time Yes How many All (17)

Number of planes 1 Type of planes 2 Engine Bomber Altitude 2000 Feet

Type of attack Dive Bombing No. planes in attack 1

Number of attacks 1 Average number of planes each attack 1

Guns firing - Size and type 40MM 20MM Number 2 7 Opening Range 2000 Feet

Ammunition expended 40MM 16 Rounds 20MM 80 Rounds Ammunition remaining

Performance of guns (Excellent, good, fair, poor) Excellent

Performance of ammunition Excellent Performance of gun crews good

Approximate altitude of bomb release 2000 Feet. Type of bombs Not known

Hits on ship None Location of hits

Damage None

Number near bomb misses One Bomb 1000 feet off Starboard Bow 12 03045  
One Damage 1000 feet off Starboard Beam

Was ship strafed No size gun  Type of bullet (explosive, etc)

Damage None

Casualties from Bomb Hits  Near Bomb Misses  Strafing

PLANES SHOT DOWN - SURE 0 POSSIBLE  DAMAGED

REMARKS: (Include commendatory or adverse comments on performance of officers and crew)

Signature N. WAGGENER

Rank Lieutenant Title D-V(S)

Sketches: (On back side of report show by outline sketch direction of attack, ship's head, relative position of Sun, positions of hits and damage, and additional remarks, as desired)

6  
895-4

21

detritus formation of soil, bioturbation of litter and detritus, and nutrient cycling. (b)  
 processes: (i) peak rates of leachate production during the period of maximum litterfall, and (ii) peak

STANFORD N. ANTONETTI

Page 10 of 10

USE AUTO SELECTED NO SINE RSN The following (EXCLUDED) are

~~INTERNAL USE ONLY - CONFIDENTIAL~~

None

CONFIDENTIAL

\_\_\_\_\_

Performance of mine (continued)

100

1930

RE  
-0  
T-1  
AD

5000

1000

100-443887-100

CONFIDENTIAL

\_\_\_\_\_

1000



ENCLOSURE (C)

1. As per reference (b) seven fathoms depth was 500 yards from shore.
2. It is the opinion of this command, in view of beaching conditions on Red Beach, that having a maximum of 30,000 gallons of fuel and water, three (3) forward ballast tanks filled and hitting the beach at flank speed, would enable LST's to clear the sand bar and be able to unload cargo on the beach. There were ten (10) feet of water under our bow when we grounded aft and 30,000 gallons of fuel and water would be sufficient for return to Humboldt Bay, Dutch New Guinea.

835-4

⑧

FE25-IST462/A9  
Serial 12.

Reg. No. 16319

R. S. No. \_\_\_\_\_

U.S.S. IST 462  
c/o Fleet Post Office  
San Francisco, Calif.  
24 Oct. 1944.

CONFIDENTIAL

From: The Commanding Officer of U.S.S. IST 462.  
To: The Commander-In-Chief, United States Fleet.  
Via: (1) Comdr. LST Unit 78.1.4 (Comdr. of LST Group TWENTY, Flot7)  
(2) Comdr. LST Unit 78.2.4 (Comdr. of LST Flotilla SEVEN)  
(3) Comdr. Transport Unit 78.1.3 (Comdr. of Transports)  
(4) Comdr. Task Force 78 (Comdr of Northern Attack Force and  
Comdr. SEVENTH Amphibious Force)  
(5) Comdr. Task Force 77 (Comdr. of SEVENTH Fleet)

12 03045

Subject: Action Report

Reference: (a) Comdr. Task Force SEVENTY-EIGHT Operation Plan 101-44.  
(b) Comdr. Task Force SEVENTY-SEVEN [REDACTED], Philippines  
Operation Plan 13-44.  
(c) Comdr. Task Group SEVENTY-EIGHT Point One Attack Order 1-44.  
(d) Comdr. SEVENTH Amphibious Force ltr. FE25/A16-3(3), serial  
0212 of February 17, 1944.

Enclosure: (A) Anti-Aircraft Action Report Form dated 20 Oct. 1944. -M-ser. 92403  
(B) Anti-Aircraft Action Report Form dated 21 Oct. 1944. -M-ser. 92404

1. In compliance to reference (b), and in accordance with reference  
(d), the following action report is submitted.

(a) This ship was part of the Northern Attack Force which consisted  
of 1 AGC, 2 RAGC's, 17 APA's, 4 AP's, 5 APD's, 2 AK's, 12 DD's, 5 LSD's,  
3 LSI's, 12 LSM's, 95 LST's, 1 CM, 2 ATF's, 6 UDT's, and miscellaneous escort  
and patrol craft whose objective was to transport and land troops, equipment  
and supplies on Red and White Beach Leyte as well as give close fire support.

(b) This ship was loaded at Hollandia, Humboldt Bay, Dutch New  
Guinea on "A-9" and "A-10" with 500 troops, 200 tons of bulk and 400 tons of  
equipment. We departed from Hollandia in the Northern Attack Force convoy  
at 1600 "A-7" for Red Beach, Leyte Island, Philippines. At 0633 on "A" day  
October 20, 1944, as the convoy was approaching the objective in Leyte Gulf  
area, a two motored enemy reconnaissance plane passed near the convoy. This  
ship, as well as the other ships in the convoy, fired at him but did not damage  
the plane for he was out of effective range. During the approach to Red Beach  
from the transport area, the LST's were under fire from the enemy shore  
artillery; the three (3) LST's on our left flank were hit two or three times  
and damaged but this ship was not hit or damaged. Since the beaching conditions  
were unsuitable, having approximately eight (8) feet of water at the ramp,

825-3  
②  
A-PART-9

24



FE25-IST462/A9  
Serial 12.

U.S.S. LST 462  
24 Oct. 1944.

CONFIDENTIAL

Subject: Action Report

-----

we were ordered to retract and anchor in the transport area. Unloading was commenced the following day "A+1" by an LCT lowering her ramp on ours. This ship finally beached at Red Beach at 1700 "A+1" and commenced unloading on pontoons. A red alert was given at 1900; one enemy plane approached the beach area for a bombing run but was driven off by anti-aircraft fire from the army on the beach. Unloading continued all night and was completed at 0700. Another red alert at 0545 and at 0615 a two (2) engined bomber was seen approaching the ships on Red Beach; anti-aircraft fire from the ships and shore batteries kept him from coming directly over the ships and he went over the hill beyond the beach. At 0620 he reappeared, but anti-aircraft fire again kept him away from the ships on the beach. The enemy plane then disappeared over a hill several thousand yards down the beach. This ship retracted from the beach at 0838 "A+3" and anchored. We were underway in convoy at 1700 for Humboldt Bay, Hollandia, Dutch New Guinea. A red alert was ordered at 1900; enemy planes appeared over the Dulag Area, Leyte Island, but did not approach our convoy leaving the area. The following morning at 0740 "A+3", one of the two escorts had a possible submarine contact so the convoy was given an emergency turn of 45° then resumed base course at 0825. The next morning at 0702 "A+4" October 24, 1944, another possible submarine contact was picked up by escort; the convoy again was given an emergency turn of 45° and resumed base course at 0707 en route to Hollandia, Dutch New Guinea. Another submarine contact was made by one of the escorts October 27, 1944 at 1500. The convoy was given two (2) 45° emergency turns to starboard. At 1507 resumed base course. One of the escorts was left behind to investigate. The convoy arrived at Humboldt Bay, Hollandia, Dutch New Guinea on "A+8" October 28, 1944, at 1245.

(c) All guns performed satisfactorily and no jams occurred. There were 142 rounds of fifty caliber, 217 rounds of twenty millimeter, and 27 rounds of 40 millimeter expended - total 386 rounds - during the operation against enemy aircraft.

(d) There was no battle damage done to this ship or to the enemy by this ship.

(e) Communication discipline of convoy was good in the objective area, but poor en route. The new radio set SCR608 performed satisfactorily.

(f) All personnel did their duty very well under fire. There were two minor casualties among the army personnel aboard from the shrapnel of an enemy shell, which hit about fifty (50) yards in front of the bow, while approaching Red Beach "A" day.

*W. D. Gregory*  
W. D. GREGORY, Lieut., USNR.  
Commanding.

895-3

③

25

FE25-IST465/Al6-3(3)  
Serial: 0283

U.S.S. LST 465  
c/o Fleet Post Office  
San Francisco, California.

Reg. 16319

23 October, 1944

C-O-N-F-I-D-E-N-T-I-A-L

From: Commanding Officer.  
To: Commander-in-Chief, U.S. Fleet.  
Via: (1) Commander Task Unit 78.1.4 (ComLSTGr20)  
(2) Commander Task Group 78.1 (Com7thPhib)  
(3) Commander Task Force 78 (Com7thPhib)  
(4) Commander SEVENTH Fleet.

Subject: Action Report - Leyte Harbor, P.I., operation.

Reference: (a) Com7thPhib Conf. ltr FE25/Al6-3(3) ser. 0212 of 12 03045  
17 February, 1944.  
(b) Article 874(6), U.S. Navy Regulations, 1920.

Enclosure: (A) Anti-Aircraft Action Report Form dated 20 Oct 1944.-p.29  
(B) Anti-Aircraft Action Report Form dated 22 Oct 1944.-p.31

1. On 20 October, 1944 this vessel was underway proceeding on course 295 T., in Leyte Gulf, Philippine Islands. All hands were at General Quarters. At 0625 one (1) Japanese twin engine bomber came in on our port side, on heading of about 115 T., approximate speed, two hundred (200) miles per hour, altitude three thousand (3,000) feet.

2. Anti-Aircraft guns of this vessel fired on the plane for a period of four minutes. At 0629 all guns ceased firing. There were no direct hits observed to have been made on the plane.

3. Total ammunition expended, and additional information on the above action is submitted herewith, enclosure (A).

4. On the morning of 20 October, 1944 at 1055 this vessel was underway with Commander Task Unit 78.1.4 proceeding to beach on Leyte Island, San Pedro Bay, Philippine Islands.

5. All ships were underway abreast in line, proceeding to the beach at two-thirds (2/3) speed, on a heading of 300 T. Japanese were firing at the ships with mortar shells. The mortar fire increased as the ships were approaching the beach. Three (3) LST's were observed to have received direct hits. Several shells hit near this vessel, but no direct hits were received. This vessel was ordered to retract as it was unable to get close enough to the beach for unloading purposes.



FE25-LST465/Al6-3(3)  
Serial: 0283

U.S.S. LST 465  
c/o Fleet Post Office  
San Francisco, California.

23 October, 1944.

C-O-N-F-I-D-E-N-T-I-A-L

Subject: Action Report - Leyte Harbor, P.I., operation.

-----

6. The position of the ship at the time that action was encountered was as follows:

Dio Island right tangent (RT) 030 T., distance 3.3 miles, Punubulu Island right tangent (RT) 065 T., distance 5.8 miles, Badungbadiung Island right tangent (RT) 104 T., distance 10.3 miles, Capines Point 111 T., distance 13.2 miles, Camiris Point, Leyte Island 172 T., distance 2.6 miles.

7. There was a slow wind from the northwest, and the sea was calm.

8. The efficiency of the ship was at its best.

9. Total ammunition expended was none, as this vessel did not fire.

10. On the morning of 22 October, 1944 this vessel was anchored in Leyte Harbor, Philippine Islands on a heading of 315 T.

11. At 0545 Red Alert warning was received by radio. All hands went to General Quarters and this vessel commenced making a smoke screen. At 0611 a single Japanese twin engine bomber identified as a Lily, came in on our port side bearing approximately 180 T., in a power dive. Anti-Aircraft guns of this vessel commenced firing on the plane. The plane crossed over this ship at an altitude of approximately three thousand (3,000) feet, dropping one (1) bomb which hit in the water about one hundred (100) feet abeam of our starboard side.

12. The wind direction was 340 T., at the time of attack, thereby permitting only partial coverage for this vessel.

13. Total ammunition expended, and additional information on subject action is submitted herewith in enclosure (B)

895-2

(3)

FE25-LST465/A16-3(3)  
Serial: 0283

U.S.S. LST 465  
c/o Fleet Post Office  
San Francisco, California.

23 October, 1944.

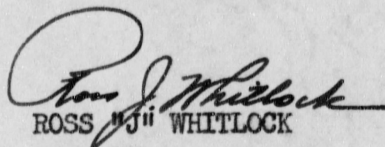
C-O-N-F-I-D-E-N-T-I-A-L

Subject: Action Report - Leyte Harbor, P. I., operation.

-----

14. There were no casualties, nor was any damage done to this vessel in any of the above actions.

15. The conduct of the personnel in the foregoing actions was very satisfactory. There was no incident at the time to warrant individual praise or censure.

  
ROSS "J" WHITLOCK

875-2

(4)



CONFIDENTIAL

## ANTI-AIRCRAFT ACTION BY SURFACE SHIPS

Location of ship Leyte Gulf, P. I. U. S. S. IST 465  
 Date 20 October 1944

## NOTES

- (a) **Repel Attack First**—Then collect data for this report!  
 (b) Do not "gun deck" this report—if data cannot be estimated with reasonable accuracy enter dash in space for which no data is available.  
 (c) These sheets are to be filled out immediately after action is completed with data available from ship's log, memory, and consultation with ship's officers. Information is essential in order that the effectiveness of our equipment can be determined. Where data is of doubtful accuracy fill in with general terms. The obtaining of this information must not be allowed in any way to adversely affect the handling of equipment during action.

1. Surprise attack (yes or no) No **12 03045**  
 2. Method picking plane up (Radar, binoculars, naked eye) Naked Eye  
 (If by Radar state type of set) \_\_\_\_\_  
 (a) Lookout(s) or special equipment detector operator(s) :  
Sterling W. SCHALLERT Lt.(jg) D-V(G) 162997  
 (Name) (Rate) (Service No.)  
 made initial contact by Sight  
 (sound), (radar), (SMSD), (MAD), (Sight)  
 3. Range plane was picked up (50 miles, 30 miles, 10 miles, less 5 miles) Less than 5 miles  
 4. Number of planes One (Lily)  
 5. Type of plane (Fighter, scout, dive-bomber) Med. Bomber Type of attack Low level  
 6. Speed & altitude (High and fast, intermediate and fast, low and fast, high and slow, intermediate and slow, low and slow) Intermediate  
 7. Guns firing 16 of 20 Size .50cal. 20MM 40MM Number 16  
 Method of control Phones / Whistles 3"/50 Method spotting Binoculars, Naked Eye.  
(Bearings and Elevation  
Relayed to Fire Control)  
 8. Ammunition expended 904 rounds  
 9. Percent service allowance expended 1%  
 10. Approximate time tracking to first shot Two Seconds  
 11. Approximate time of first hits None Observed  
 12. Approximate time first shot to last shot Two Minutes

815-2

⑤

Enclosure (A)

29

**CONFIDENTIAL**

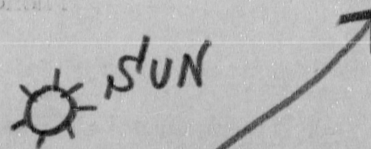
13. Approximate position angle open fire ..... **15°** .....
14. Approximate position cease fire ..... **25°** .....
15. Approximate bearing first shot ..... **230° Relative** .....
16. Approximate bearing last shot ..... **120° Relative** .....
17. Approximate range first shot ..... **7,000 Yards** .....
18. Approximate range last shot ..... **7,000 Yards** .....
19. Approximate altitude of bomb release ..... Type bomb .....
20. Approximate range torpedo release ..... Size of torpedo .....
21. Hits on ship **None** Was ship strafed **No** Size gun .....
22. Number near bomb misses **None** Casualties from near misses **None** .....
23. Planes shot down—Sure **None** Possible ..... Damage **Yes** .....
- By what size gun .....
24. Details of damage to target by gunfire if available **None** .....
- .....
- .....
25. Performance of ammunition (Excellent, good, bad, poor) **Excellent** .....
26. Pattern sizes (Large, small excessive) **Large** .....

**SKETCH**

- (a) Indicate direction of attack relative ship's head.
- (b) Show relative position of sun.
- (c) Indicate own maneuvers. **Ship was in convoy position, no special maneuvers.**

**PLANE  
FLIGHT**

**000° R**



895-2

**(6)**

Enclosure (A)



Location of ship San Pedro Bay, Leyte, P.I. U. S. S. LST 465  
Date 22 October 1944

- (a) **Repel Attack First**—Then collect data for this report!
- (b) Do not “gun deck” this report—if data cannot be estimated with reasonable accuracy enter dash in space for which no data is available.
- (c) These sheets are to be filled out immediately after action is completed with data available from ship's log, memory, and consultation with ship's officers. Information is essential in order that the effectiveness of our equipment can be determined. Where data is of doubtful accuracy fill in with general terms. The obtaining of this information must not be allowed in any way to adversely affect the handling of equipment during action.

~~12 03045~~

1. Surprise attack (yes or no) No
2. Method picking plane up (Radar, binoculars, naked eye) Naked Eye  
(If by Radar state type of set) \_\_\_\_\_

310783  
(Service No.)

made initial contact by Sight  
(sound), (radar), (SMSD), (MAD), (Sight)

3. Range plane was picked up (50 miles, 30 miles, 10 miles, less 5 miles) Less than 5 Miles
4. Number of planes One (Lily)
5. Type of plane (Fighter, scout, dive-bomber) Med. Bomber Type of attack Low Level
6. Speed & altitude (High and fast, intermediate and fast, low and fast, high and slow, intermediate and slow, low and slow) Low and very fast, 300 miles per hour, 3,000 feet.
7. Guns firing 4 of 20 Size 40MM, 20MM Number 4
- Method of control Phones & Whistles Method spotting Binoculars, Naked Eye.  
(Bearing and Elevation relayed to Fire Control)
8. Ammunition expended 62 rounds
9. Percent service allowance expended .08%
10. Approximate time tracking to first shot 20 seconds
11. Approximate time of first hits None observed
12. Approximate time first shot to last shot 30 seconds

Enclosure (B)  
~~XXXXXXXXXX~~

**CONFIDENTIAL**

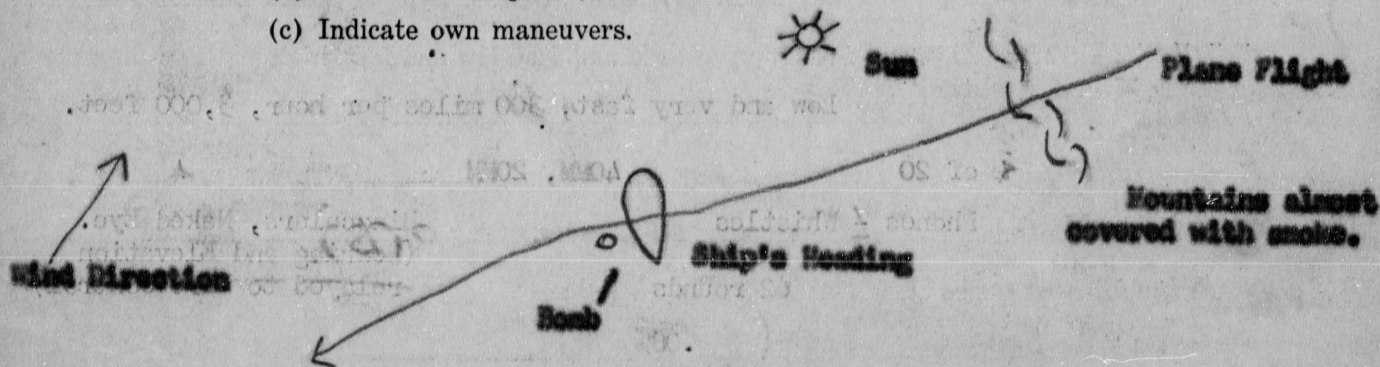
13. Approximate position angle open fire ..... **45°**
14. Approximate position cease fire ..... **30°**
15. Approximate bearing first shot ..... **270° Relative**
16. Approximate bearing last shot ..... **080° Relative**
17. Approximate range first shot ..... **3,000 Yards**
18. Approximate range last shot ..... **4,000 Yards**
19. Approximate altitude of bomb release ..... **3,000 Yards** ..... Type bomb ..... **250 pounds**
20. Approximate range torpedo release ..... \_\_\_\_\_ Size of torpedo ..... \_\_\_\_\_
21. Hits on ship ..... **None** ..... Was ship strafed ..... **No** ..... Size gun ..... \_\_\_\_\_
22. Number near bomb misses ..... **One** ..... Casualties from near misses ..... **None**
23. Planes shot down—Sure ..... **None** ..... Possible ..... **None** ..... Damage ..... **None**

By what size gun ..... \_\_\_\_\_

24. Details of damage to target by gunfire if available ..... **None**
25. Performance of ammunition (Excellent, good, bad, poor) ..... **Good**
26. Pattern sizes (Large, small excessive) ..... **Small**

**SKETCH**

- (a) Indicate direction of attack relative ship's head.
- (b) Show relative position of sun.
- (c) Indicate own maneuvers.



895-2

⑧

- (c) Anchored making smoke. Wind blew smoke off forward half of ship exposing vessel. Smoke made it difficult to spot plane, or for guns to fire.

Enclosure (A)



C-O-N-F-I-D-E-N-T-I-A-L

U. S. S. LST 466  
Fleet Post Office  
San Francisco, California

Reg. No.	16319
R. S. No.	

FE25/LST466/A16-3  
Serial 0239-44

22 October 1944

From: Commanding Officer, U.S.S. LST 466.  
To : Commander in Chief, United States Fleet.  
Via : (1) Commander Task Unit 78.1.4.  
(Commander LST Group TWENTY).  
(2) Commander Task Group 78.1.  
(Commander SEVENTH Amphibious Force).  
(3) Commander Task Force 78.  
(Commander SEVENTH Amphibious Force).  
(4) Commander SEVENTH Fleet.

12 03045

Subject: ~~Philippine~~ Operation - Action Report.

Reference: (a) Article 874(6), U.S. Navy Regulations, 1920.  
(b) Com7thPhib conf. ltr., Serial 0212 of  
17 February 1944.

1. In accordance with references (a) and (b), report is hereby made of action of this vessel during subject operation.

2. In accordance with dispatch orders from CTF 76, this vessel departed from Alexishafen, British New Guinea at 0200I, 7 October in company with U.S.S. LST 397 to load for Echelon LL White at Cape Cretin, British New Guinea. Arrived Cape Cretin 1100I, 8 October, loaded elements of U.S. Army X Corps Headquarters and Staff, and departed at 1900I, 9 October. Proceeded independently to Hollandia, Dutch New Guinea, arriving 0400I, 12 October 1944. During this passage was informed by Commander of troops aboard that unit was scheduled to land on Red Beach and not White Beach. As result, after arrival at Hollandia was assigned to Task Group 78.1.4. At Hollandia, Captain R. M. SCRUGGS (Commander LST Flotilla SEVEN) shifted his flag to this ship. At 1600I, 13 October departed Hollandia in formation with Task Force 78 for Leyte Island, Philippine Islands.

3. Arrived Leyte Gulf early morning of 20 October. At daylight one (1) Betty sighted off the port bow at about 10,000 feet out of range and flew over rear of formation. Proceeded according to plan in company with Red Beach LSTs and anchored southeast of Marikuitdaquit Island. Underway at 1030I for beach. At 1110I, LSTs formed up at line of departure in line, this ship being on the extreme right flank, approximately 2000 yds. from LST 452 guideship which was on left flank. Approaching beach at 2/3 speed. At 1120I, LSTs came under fire of Jap defense guns - observed fire on main deck of LST 452 and hits on LST 181. Location of guns was unknown. This

C-O-N-F-I-D-E-N-T-I-A-L

FE25/LST466/A16-3  
Serial 0239-44

22 October 1944

*Philippine*  
Subject: [REDACTED] Operation - Action Report.

-----

ship apparently out of effective range of guns; however one fall of shot observed three (300) hundred yards, five (5) degrees off our port bow, twelve hundred yards (1200) off beach and one shot fell astern approximately same distance from beach; heard one heavy projectile ricochet overhead. One man received stray bullet hit on helmet. Due to crowding of ships in approach lane, this ship fell a ship length astern of LST 168 in order to maneuver left to get on assigned beaching range. Observed LST 168 go aground three hundred (300) yards off beach and increased speed to full. However at 1120I, went aground astern same distance out. Soundings were eleven (11) feet forward and between eleven (11) and twelve (12) feet aft. At 1130I on orders of Task Unit Commander retracted and proceeded to anchorage in transport area where two (2) Dukws and (2) Buffalos were discharged. Anchored for remainder of day and night. At 0705 next day proceeded to anchorage fifteen hundred (1500) yards off Red Beach. Discharged troops, vehicles and bulk cargo into LCTs. Took on THIRTY-NINE (39) stretcher cases for treatment by Surgical Team #9 and return to Hollandia. Unloading completed at 1430I. Underway at 1700I in company with LSTs for Hollandia, arriving without further incident.

4. Remarks on ordnance material - None.
5. No damage was received by this ship on enemy.
6. No special comments.
7. Performance of personnel was up to standard. There were no casualties.

*Richard E. McCarty*  
Richard E. McCARTY

815-1

(3)

34



064545  
File No. FE25/A16-3  
Serial No. 01665

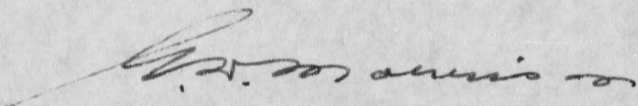
SEVENTH AMPHIBIOUS FORCE  
Fleet Post Office  
San Francisco, California

CONFIDENTIAL

FIRST ENDORSEMENT on:  
Cdr. Task Unit 78.1.4  
(ComLSTGr 20) Conf. ltr  
FE25/A16-3 of 1 Nov. 1944.

5 DEC 1944

From: Commander Task Force 78  
(Commander SEVENTH Amphibious Force).  
To : Commander-in-Chief, U.S. Fleet.  
Via : Commander Task Force 77  
(Commander SEVENTH Fleet).  
Subject: Action Report; LEYTE Operation.  
1. Forwarded.

  
G. D. MORRISON,  
Assistant Chief of Staff,  
Operations.

12 03045

UNITED STATES FLEET  
COMMANDER SEVENTH FLEET

Al6-3(F-3-4/whr)

Serial 03342

Reg. No. 16319  
R. S. No. \_\_\_\_\_  
14 DEC 1944

CONFIDENTIAL

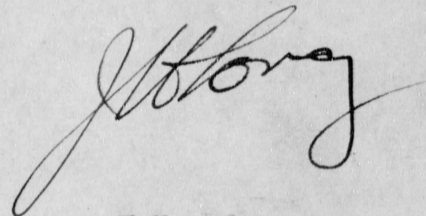
SECOND ENDORSEMENT to:  
Cdr. Task Unit 78.1.4  
(ComLSTGr 20) Conf. Ltr  
FE25/Al6-3 of 1 Nov. 1944.

From: Commander Seventh Fleet.  
To: Commander in Chief, United States Fleet.

Subject: Action Report; LEYTE Operation.

1. Forwarded.

12 03045



J. H. LONG.  
By direction           

NO